



NEWSLETTER

The official publication of the City of Sammamish

**COUNCIL SELECTS TOWN CENTER
ALTERNATIVE FOR FINAL STUDY**

**SEPTEMBER IS EMERGENCY
PREPAREDNESS MONTH**

**CITY ADOPTS FIRST ARTS
STRATEGIC PLAN**

August 2025

Sammamish City Council



Karen Howe
Mayor



Amy Lam
Deputy Mayor



Roisin O'Farrell
Councilmember



Kali Clark
Councilmember



Kent Treen
Councilmember



Pamela Stuart
Councilmember



Sid Gupta
Councilmember

Council Meetings

Regular council meetings are held on the first Tuesday and third Tuesday of each month at 6:30 p.m., with a study session on the second Tuesday at 6:30 p.m. For more information, go to sammamish.us/citycouncil.

To contact the Sammamish City Council, email citycouncil@sammamish.us.

Coffee with Council

Join us for a cup of coffee and conversation. Coffee with Council happens the first Saturday of every month with rotating councilmember attendance. Meet them at 9:30 a.m. at Metropolitan Market in Sammamish. The councilmembers may be in the outdoor seating area depending on the weather conditions. Otherwise, you will find them in the upstairs seating area near the café. We hope to see you there!

coffee w/council



First Saturday of Every Month
9:30 a.m.
Metropolitan Market



City adopts first Arts Strategic Plan

The City of Sammamish is proud to announce the adoption of its first Arts Strategic Plan—a community-driven roadmap to guide arts and culture investments for years to come.

The Plan lays out a clear vision for how Sammamish can integrate arts and culture to foster civic identity, celebrate local talent, and reflect the beauty and diversity of our community. Residents expressed strong support for more public art, live music, community-driven events, and inclusive programming that brings neighbors together across cultures and generations.

With Council adoption complete, the Arts Commission will begin implementing the Plan's near-term priorities, including developing a two-year arts work plan, applying new project selection criteria, and building partnerships to expand arts access across Sammamish. Upcoming steps also include identifying ways to better support local artists and planning year-round events that reflect the unique spirit of our City.

This is just the beginning. As Sammamish continues to grow, the Plan provides a flexible framework to expand cultural offerings and ensure the arts remain a vibrant part of community life.

Visit the City's website to view the Arts Strategic Plan.

www.sammamish.us/government/commissions/arts/arts-strategic-plan/

Don't miss our fall recycling events



The City will host two fall recycling events, Sept. 20 and Nov. 1 at Eastside Catholic School from 9 a.m. – 3 p.m. Don't miss out on the chance to recycle your unwanted items and help reduce waste in our community.

Thanks to the ongoing support of King County Solid Waste Department, King County Hazardous Waste Management Program, and the Washington State Department of Ecology, these events are open to all Sammamish and Issaquah residents. Since 2000, our Recycling Events have been a great success—averaging around 1,260 cars in attendance and 42.7 tons of recyclables collected per event since 2021. For comparison, 42.7 tons of material is equivalent to just over 21 full-size pickup trucks (ex. 21 Ford F-150s).

An accepted materials list will be mailed to every household and posted on the City's website as soon as it's available. For details and to stay updated, visit the City's Event Calendar. We look forward to seeing you there!

www.sammamish.us/news/events

September is National Preparedness Month

September is National Preparedness Month, and the City of Sammamish encourages all residents to take proactive steps to be ready in case of an emergency. The City will be tabling at the Farmer's Market on Sept. 3 and Sept. 10 to provide emergency preparedness information.

National Preparedness Month is an annual observance held every September in the United States to promote family and community disaster planning. It was established in 2004 by the Federal Emergency Management Agency and is part of the Ready Campaign.

These simple actions can make a big difference—possibly even saving lives.

To learn more visit: www.sammamish.us/our-community/emergency-management/



1. Be Informed

Staying informed before, during, and after an emergency is critical.

- Sign up for ALERT King County, the region's free public notification system. You'll receive real-time emergency updates via text, email, or voice—and it's available in 29 languages. Sign up at www.kingcounty.gov/alert.
- Follow the City of Sammamish on social media for updates. We also recommend following the King County Sheriff's Office and Eastside Fire & Rescue for timely emergency information.
- Tune in to AM radio during power outages. Sammamish residents can receive local updates on AM 540.



2. Make a Plan - and Practice it

Meet with your household to develop a customized emergency plan. Consider:

- The ages and needs of everyone in your home (including your pets)
- Medical conditions and prescriptions
- Dietary restrictions
- Communication methods and meeting locations



3. Build an Emergency Kit

Prepare a kit with supplies to last at least 72 hours. Keep it compact and easy to carry. Include:

- 1 gallon of water per person per day
- Non-perishable food (granola bars, canned goods, dried fruit)
- Prescription medications and first-aid supplies
- Flashlights and extra batteries
- Hygiene items (soap, toothbrush, sanitizer)
- Blankets, sleeping bags, extra clothes
- Important documents in a waterproof bag
- Cash
- Local maps and evacuation routes
- Charging cables and battery-powered or hand-crank radios
- Pet supplies if applicable



4. Get Involved: Join CERT

The Community Emergency Response Team (CERT) program trains everyday residents to safely help themselves, their families, and neighbors in a disaster. When professional responders are delayed, CERT members can provide essential support.

CERT training includes:

- Disaster preparedness
- Light search and rescue
- Fire suppression
- First aid and disaster medicine
- Lifting and cribbing
- A half-day disaster simulation exercise

Led by Eastside Fire & Rescue, and trained volunteers, the CERT course includes 20 hours of training and concludes with a full-scale exercise.

Our fall cohort is full, but stay tuned online for more information about future opportunities.

Back-to-school driving tips

As students head back to school, drivers should slow down and stay alert to keep kids safe. With school zones soon to be active again, it's critical for motorists to observe reduced speed limits, watch for crossing guards, and be prepared for sudden stops near crosswalks and bus stops.

The National Highway Traffic Safety Administration reports that more children are injured in pedestrian-related accidents during the school year, especially during morning and afternoon drop-off times. Drivers should never pass a school bus with its stop arm extended—it's not only dangerous, it's illegal.

For students walking or biking, basic safety rules apply: use sidewalks, look both ways before crossing, wear helmets when biking, and make eye contact with drivers before crossing the street.

With a few extra precautions, everyone can help ensure a safe start to the school year for every student.



Sammamish works on Overlay, ADA Barrier projects this summer

The City of Sammamish is moving forward with important summer infrastructure projects aimed at improving road conditions and accessibility throughout the community.

One of the major efforts underway was the 2025 Overlay Project, which resurfaced a one-mile stretch of East/West Beaver Lake Drive Southeast. The project included removing the top layer of pavement, performing necessary repairs, and laying new hot-mix asphalt, followed by fresh roadway markings. These improvements will enhance the safety and longevity of this well-traveled corridor.

To learn more about this project visit:
www.sammamish.us/projects/2025-pavement-overlays/

In addition, the City is working on the 2025 ADA Barrier Project, focused on upgrading public right-of-way features to meet Americans with Disabilities Act standards. Planned improvements include:

- Replacement of damaged sidewalk panels at 16 locations along 228th Avenue Southeast/Northeast, from Southeast 4th Street to Northeast 8th Street.
- Replacement of pedestrian curb ramps at two intersections on Southeast Klahanie Boulevard (256th Avenue Southeast & Southeast 39th Way).

The work will also address curb and gutter replacement, roadway striping, and tree root management. The project is expected to be completed in August.

These efforts are part of Sammamish's ongoing ADA Transition Plan, which identifies and removes barriers to accessibility in City buildings, parks, and pedestrian facilities.

To learn more about this project visit:
www.sammamish.us/projects/2025-ada-barrier-removal-project/



Sammamish 101: City's Sustainability work aims to educate

Do you know how your local government works? We've shared a lot of information about the role and responsibilities of various positions in local government. Now, we want to highlight some of the departments within the city and the work that they do.

The City has a commission and staff member dedicated to sustainability efforts. We adopted our first Climate Action Plan (CAP) in 2023, which is a strategic framework for measuring, planning, and reducing greenhouse gas emissions over time. It identifies a path forward to meet ambitious goals set by the city: one of the most notable is a 50% reduction of GHG emissions by 2030 and 96% by 2050.

The Sustainability Commission and our Natural Resource and Environmental Sustainability Coordinator help engage the community by tabling at events, providing information about projects and programs, and so much more! Since adopting the CAP, we completed a fleet electrification plan, right-of-way tree study, and published our first Sustainable Sammamish Guide. Last year the City also joined our neighboring cities on the Energy Smart Eastside program, which connects residents to info and rebates related to heat pumps.

By working together, residents and city officials are taking important steps to ensure that future generations can continue to enjoy the city's natural beauty and resources. Whether you're a longtime resident or a newcomer, we invite you to join us in our efforts to create a more sustainable Sammamish!

Visit [Sammamish.us/Sustainability](https://www.sammamish.us/Sustainability) to learn more.

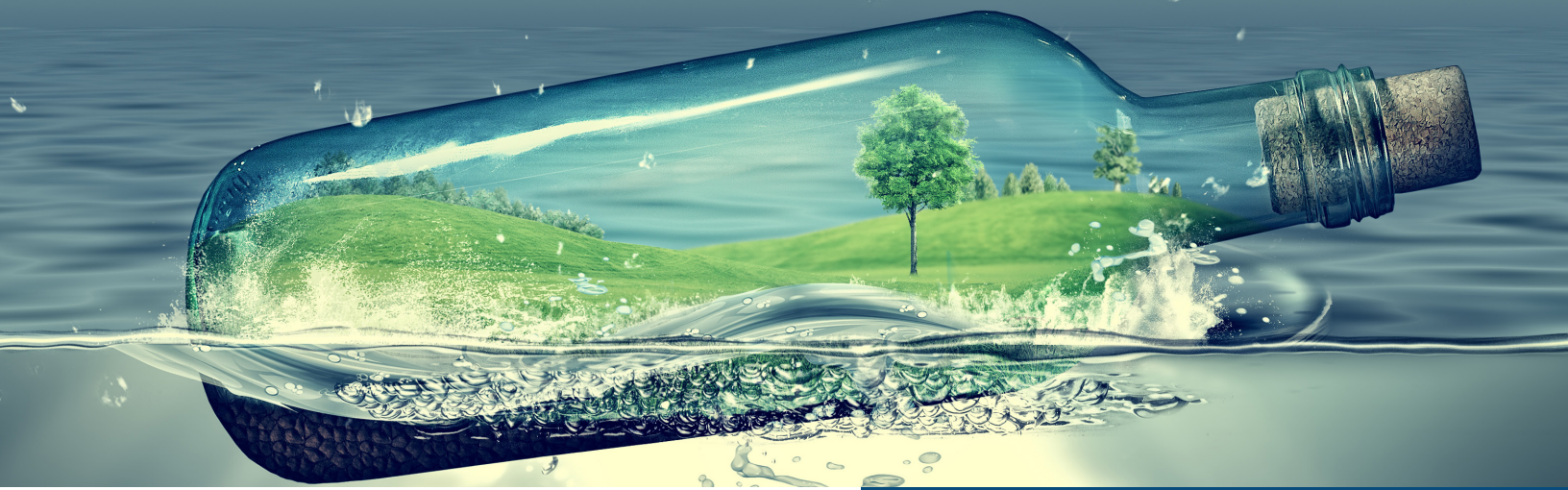
By the numbers

7
Sustainability commissioners

9
Commission meetings in 2024

16
Events last year

37
Social media posts in 2024



Conscious water conservation

Water conservation is an essential component of sustainability and impacts resource availability, ecosystem functionality, and drought resilience. Water conservation means less water is diverted from our rivers, bays, and other sources, which helps keep the environment healthy. Water efficiency reduces water and wastewater treatment costs and the amount of energy used to treat, pump, and heat water.

Water Conservation

- Reduce your water use, visit Watercalculator.org
- Install water-efficient appliances and devices.
- Landscape around your home using drought-tolerant grasses, trees, and other vegetation.
- Drought preparedness: Learn about water restrictions in your area.

During a drought

- Reduce your water use. **Visit Watercalculator.org**
- Take shorter showers.
- Don't let the water run while brushing teeth or shaving.
- Don't wash your car.
- Only do laundry and dishes when you have a full load.
- Forego watering your lawn or other outdoor plants. If you must water outdoors, do it in the early morning or late evening when it's cooler and less likely to evaporate.
- Be aware of water restrictions.
- As drought worsens, the chance of wildfires increases. Avoid outdoor burning, using fireworks, or activities that can cause sparks.

Learn more about what you can do to make a positive impact on the environment at Sammamish.us/Sustainability.

Planting a tree is as easy as 1, 2, 3

1

Fall is the best time of year to plant a new tree in Sammamish. The rainy season and cooler temperatures help trees establish a stronger root system.

2

Be sure to think about how much available space you have, the surrounding structures like your house and fence, and overhead and underground utilities.

- You can call "811" 2 days before digging to get utilities marked.
- Short, flowering trees won't clash with overhead power lines.
- Large deciduous trees are best on the southeast, southwest, and west to provide cooling shade in the summer.

3

Trees need maintenance throughout their lives, but it is particularly important right after planting. Detailed tree care information is available at www.arboday.org/trees/tips/.

Louis Thompson Road Tightline Project paving to begin in September

Construction is progressing on the Louis Thompson Road Tightline Project. In June, the new underground stormwater drainage system was completed, to be followed by installation of curb, gutter, sidewalk, and retaining walls.

The final road paving is scheduled for September, with striping, signage, and other finishing touches continuing into the fall. For updates about this project please visit our website:

www.sammamish.us/projects/louis-thompson-tightline/

This project upgrades the aging stormwater system to help prevent flooding, erosion, and landslides along the corridor. By reducing erosion, the project also supports the health of Zackuse Creek and Kokanee salmon spawning areas, contributing to the City's broader environmental and water quality goals.

The project also provides improved access for pedestrians and bicyclists to the East Lake Sammamish Trail entrance at the bottom of the hill. Likewise, traffic signal hardware will be improved for better operation.



Sammamish Police provide information about e-bikes

Electric-assisted bikes (e-bikes) are growing in popularity around Sammamish—but they're often confused with e-motorcycles. Each has different classifications and legal requirements. To help clarify, the Sammamish Police Department has updated its webpage with detailed guidance.

On July 15, 2025, Sergeant Derek Jones also briefed City Council on e-bike and e-motorcycle safety and enforcement. You can view the presentation here: <http://bit.ly/412dtN2>

Here are a few key takeaways:

- Class 1 & 2 e-bikes top out at 20 mph. Class 1 requires pedaling; Class 2 can operate via throttle.
- Class 3 e-bikes go up to 28 mph with pedaling and must have a speedometer. Operators must be at least 16.
- E-bikes are not allowed on soft-surface trails or boardwalks in Sammamish. Class 3 e-bikes are not allowed on sidewalks unless no other bike or pedestrian path is available.

E-motorcycles are not the same as e-bikes. They have over 750 watts of power, no pedals, and must be registered, street-legal, and operated only by licensed drivers wearing helmets. Without road-legal equipment (lights, signals, mirrors, etc.), they are considered dirt bikes and cannot be used on roads, trails, or sidewalks.

Learn more: www.sammamish.us/government/police/e-bicycles-e-motorcycles/



City Council chooses an action alternative for the Town Center

At their July 15, 2025 meeting, City Council directed staff to study the Action Alternative in the Town Center Supplemental Environmental Impact Statement (EIS), which looks at an additional 2,000 housing units as part of the evolving Town Center Plan & Code Amendment Project—a step forward in shaping Sammamish’s future. The next steps in the plan update include finalizing the draft EIS, refining the draft plan and code, and initiating the review and adoption process. Council’s direction was to study the potential impacts of an additional 2,000 units—this was not a final decision, but rather a step toward gathering more information to support future discussions.

Like communities across our region, Sammamish is growing. Rather than letting that growth spread without direction, we’re planning thoughtfully—by focusing it in Town Center, we are creating a walkable, connected, vibrant neighborhood with amenities and services that will benefit our entire city. The vision remains mostly unchanged and lines up with recent growth policy work like the Comprehensive Plan.

The Town Center Plan includes the following guiding principles:

- Create a uniquely Sammamish central gathering place that offers a range of cultural, recreational, and commercial activities.
- Create opportunities for more diverse and affordable housing.
- Ensure growth pays for growth by requiring developers to pay for infrastructure as they develop and through impact fees.
- Ensure impacts on traffic, utilities and services, schools, and the environment are mitigated.

City Council is preliminarily scheduled to review the project in November and December.

For more information, including drafts of the Town Center Plan and Code updates, frequently asked questions (FAQs), and background information, please go to [Town Center Plan & Code Amendment page](#).



Mid-Biennial budget amendment and adjustment coming this fall



This October and November, the City Council will review proposed changes to the 2025-2026 biennial budget as part of a routine process known as a “Mid-Biennial Budget Amendment and Adjustment.” This is a normal process for cities that budget on a two-year basis. Think of it as a financial check-up, allowing the City to incorporate what it learned in the first year to fine-tune the second year of the budget.

The upcoming budget amendments and adjustments are primarily “housekeeping” in nature. This includes reallocating existing budget dollars to account for changes in project schedules and for new projects that were unknown when the budget was drafted. It will also account for new revenue sources, such as grants and the utility tax. The goal is to ensure the City’s budget remains an accurate reflection of its priorities and financial activities.

The City is pleased to report that financial results are tracking closely with projections. Finance Director Vicky Carlsen presented first-quarter 2025 results to City Council on July 15, showing that revenues and expenditures for the general fund are on track with the City’s projections.

If you are interested in learning more about this process, please tune into the City Council meetings in October and November. The meetings will include informational presentations, deliberations, and opportunities for public input. Please visit the City’s website for more information and to view the City Council meeting calendar.

Sunset with the Symphony



Join us for an unforgettable summer evening as the Sammamish Symphony fills the air with the sounds of beloved classical favorites, lively pops tunes, and iconic movie music! Bring your own chair or blanket and enjoy a spectacular outdoor concert in a beautiful setting. Food trucks will be on site with dinner options for purchase. Whether you’re a lifelong symphony lover or just looking for a perfect way to spend a summer night, this event is not to be missed!

Thursday, Sept. 4

5:30-7 p.m.

Sammamish Commons Plaza, Town Center

City starts work on Fish Passage Barrier Assessment

The City of Sammamish has started to work on the fish passage barrier assessment and prioritization project. This science-based project is a partnership with Wild Fish Conservancy to inventory, assess, and prioritize fish passage barriers within the City.

This effort will then guide efficient restoration and repair strategies, inform funding opportunities, and engage the public and stakeholders through coordinated outreach and reporting. The City of Sammamish's Stormwater Comprehensive Plan prioritizes sustainability and health as overarching goals. Part of reaching those goals is prioritizing existing fish passage barriers for repair and replacement.

Lake Sammamish is home to a variety of salmonoid species, including the kokanee salmon. Currently, kokanee salmon spawn in five streams within the City. Culverts and other barriers can prevent the migration of kokanee salmon from Lake Sammamish to upland streams to spawn. The City of Sammamish 2016 Storm and Surface Water Comprehensive Plan recommended the City fund an ongoing program to inventory, plan, and replace priority culverts to be fish passable.

One of the project goals is to incorporate public involvement and education by recognizing the importance of community context, values, and needs to the success of the overall project. Outreach will focus on communicating with the public on the importance of protecting salmonoid species, as well as gathering input on the prioritization criteria and improvement strategies.

Resources:

Fish Passage Barrier Assessment:

www.sammamish.us/projects/fish-passage-barrier-assessment/

Stormwater Comprehensive Plan:

www.sammamish.us/projects/stormwater-comprehensive-plan/

2016 Storm and Surface Water Comprehensive Plan:

www.sammamish.us/projects/stormwater-comprehensive-plan/



City celebrated Pride at the Sammamish Farmers Market

City officials recognized Pride month at the Sammamish's Pride event, June 25, which was hosted at the local farmers market.

Deputy Mayor Amy Lam, City Councilmembers Kali Clark, Roisin O'Farrell and Pam Stuart dropped by to show their appreciation for the LGBTQ+ community and highlight the importance of maintaining and growing this event.

"We support the LGBTQ+ community, we are allies," Lam said. "We also celebrate Pride Month because we think it is really important to show that the LGBTQ community feels safe, accepted and supported."

For Councilmember Clark, this is her last Sammamish Pride on City Council. She is not running for reelection, instead focusing on a career change. Clark is credited for backing the Pride event and emphasizing the importance of the City hosting so that the community had a safe space to gather.

"Every year it does grow," Clark said. "It's not just a month. It's every day. I've enjoyed serving the City."

How to Get Information & Get Involved

Sammamish City Council Meetings

Regular city council meetings are held on the first Tuesday and third Tuesday of each month at 6:30 pm, with a study session on the second Tuesday at 6:30 pm. For agendas, minutes, and meeting videos, go to sammamish.us/citycouncil. To contact the Sammamish City Council, email citycouncil@sammamish.us.

Sammamish Planning Commission

Sammamish Planning Commission meetings are held on the first and third Thursdays of each month at 6:30 pm. For agendas, minutes, and meeting videos, go to sammamish.us/planningcommission. To contact the Sammamish Planning Commission, email planningcommission@sammamish.us.

Additional Public Meeting Information

Stay informed on city government with CivicWeb Portal. See a schedule of meetings, get meeting agendas, and view past meetings at sammamishwa.civicweb.net

Receive Email and Text Alerts

To subscribe to the City of Sammamish email updates and text alerts go to sammamish.us/subscribe.

City Newsletter

Suggestions or concerns? Contact communications@sammamish.us

Follow City of Sammamish on Social Media



Scan the QR code or visit us at www.sammamish.us

RESOURCES FOR SAMMAMISH RESIDENTS

Police/Fire Emergency 911

Police Non-Emergency (206) 296-3311

Eastside Fire & Rescue (425) 313-3200

King County Sheriff (206) 263-9133

King County Animal Control (206) 296-7387

Garbage - Republic Services (425) 646-2400

Sammamish Permit Center (425) 295-0531

Sammamish Plateau Water and Sewer (425) 392-6256

NE Sammamish Water and Sewer (425) 868-1144



City of Sammamish
801 228th Ave SE,
Sammamish, WA 98075
425-295-0500 • www.sammamish.us

PRSR STD
U.S. Postage
PAID
Seattle, WA
Permit No. 1

ECRWSS
Postal Customer



We are hiring

Looking to make a difference in your community? The City of Sammamish is hiring and currently looking to fill multiple positions across various departments. Whether you're an experienced professional or just starting your career, there may be a role that's right for you.

Explore open opportunities and apply today at:
www.governmentjobs.com/careers/sammamish/

Join a team committed to public service, innovation, and the future of Sammamish!